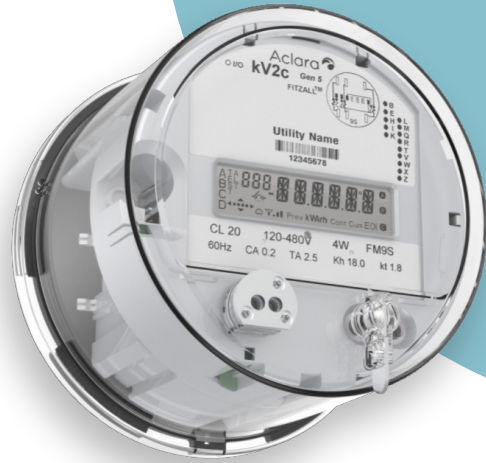




# Metrum Cellular® LTE for Aclara kV2c Gen 5

The Metrum Cellular LTE is a drop-in module to the Aclara kV2c Gen 5 meter family.



## SPECIFICATIONS OVERVIEW

Line Voltage	Auto Range 120-480
Frequency	VAC ± 20%
Frequency	60 Hz ± 3Hz
The Metrum Cellular LTE support the following Meters and firmware	Aclara Gen 5 meter with meter firmware v. 4.18.1.x or newer
Cellular Carrier	Verizon® LTE only (band 13 and band 4)
Minimum System Requirements Versions listed or higher	UtiliWise®, MV90, Aclara MeterMate™
Height	6.125 inches
Weight (integrated)	4.0 lbs
Diameter	7 inches
Mounting	The Metrum Cellular LTE is a drop-in Module to the Aclara kV2c Gen 5 meter family.

## ELECTRICAL RATINGS

Parameter	Rating		
Power Consumption	Voltage	Max Current	Max Watts
	120VAC	35mA	4.24 W
	240VAC	25mA	5.92 W
	277VAC	25mA	6.94 W
	480VAC	29mA	13.70 W
Over Current Protection	VAC ± 20%		
Internal Fusing	No		
Grounding	Varies by Meter Form		
Power Supply	AC lines		
Electronics Isolation	Electronics are isolated from power line		

## COMPLIANCE SPECIFICATIONS

Parameter	Rating
ANSI C12.1-2008	American National Standard for Electric Meters Code for Electrical Metering
EMI/RFI Emission Conducted/Radiated	CFR 47, FCC Part 15 A & B, Class B Digital Device
Meters Accuracy	The integrated product meets the meter accuracy requirements of ANSI C12.1 Section 4.7.3
Operating Temperature	Rated -40°C to +70° C
Relative Humidity	ANSI 40° C for three 24 hour cycles at 95 ±4% relative humidity, non-condensing
Verizon Open Development Initiative (ODL)	Verizon Open Development Device Certification